

### Product Overview

The CTS system is an unsealed and sealed terminal system, tab size 1,5 x 0,6 and 1,5 x 0,8. The CTS system was developed by Delphi Connection Systems to be compatible with Volkswagen QKK cavity dimensions and to outperform competitive systems. The system design provides high-quality contact forces with minimal insertion forces.

### Market Segments

Automotive  
Non-Automotive

### Features and Benefits

- 2-piece Contact system
- Mating tab 0,6 and 0,8 mm with one part number
- Unsealed and sealed versions available
- Compatible to QKK cavity requirements
- Minimized mating force
- Preloaded support spring at sleeve
- Stable contact force at high temperature
- Secondary lock from four sides possible
- Vibration resistant

### Application Guidelines

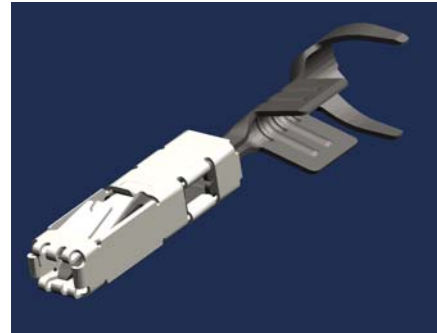
Crimp sizes:

0.22-0.35mm<sup>2</sup>, 0.5-1.0mm<sup>2</sup>, 1.0-1.5mm<sup>2</sup>

Tin-plated

Max current capacity 19A

Temperature range -40°...135°



### Terminal Crimp Tooling

Delphi Global Crimp Tooling  
PSG Hand Crimp Tool

**NOTE:** For correct reference of terminal part number to the hand crimp tool please contact your Power & Signal Group Representative.

### Terminals

15332208	female, sealed, tin, 0.22-0.35mm <sup>2</sup>
15432210	female, sealed, tin, 0.50-1.0mm <sup>2</sup>
15432212	female, sealed, tin, 1.0-1.5mm <sup>2</sup>
15432237	female, unsealed, tin, 0.22-0.35mm <sup>2</sup>
15432235	female, unsealed, tin, 0.50-1.0mm <sup>2</sup>
15432233	female, unsealed, tin, 1.0-1.5mm <sup>2</sup>
15432231	female, double crimp, tin, 1.0-1.5mm <sup>2</sup>

For pricing and samples, contact your Power & Signal Group Representative. Or, visit us on the web at [www.powerandsignal.de](http://www.powerandsignal.de).

For drawings, data sheets or 3-D CAD models, call our engineering department.

REV: 3-Nov-06